

# Main Screen



# Multiple stock display in single screen



# Stock Filter Screen with IGS Query and Result

The screenshot displays the 'I Guide Stocks' application interface. The main window title is 'I Guide Stocks'. The menu bar includes 'File', 'Download', 'View', 'Configure', 'Tools', 'Info', 'Board Meeting', 'Indexes', and 'Help'. The toolbar contains various icons for search, navigation, and data manipulation. Below the toolbar, a red banner reads 'Live graph for all cnx500 stocks.' The left sidebar shows a tree view of 'Indexes' with folders for 'jrnifty', 'cnxit', 'cnx500', 'cnx100', 'cnxmidcap', 'lessthan50', 'nifty', 'cnxbank', and 'niftymidcap50'. The main area shows an 'IGS SQL Query' window with the following query: `select symbol,close[0],low[0],lowindays[5,0] from table where low[0] <= lowindays[5,0]`. Below the query, a table displays the results of the query.

SYMBOL	CLOSE[0]	LOW[0]	LOWINDAYS[5;0]
GTL	409.10	406.05	406.05
HEXWARE	72.80	72.40	72.40
MINDTREE	552.25	548.10	548.10

# IGS Analysis Panel

**iGuide Stocks**

File Download View Configure Tools Info Board Meeting Indexes Help

Year Line 1-Day

One month intraday charts are available for all CNX500 stocks.

Indexes

- irnifty
- cnx10
- cnx500
- cnx100
- cnxmidcap
- lessthan50
- nifty
- cnxbank
- niftymidcap50

ACC 2008 Line 1-Day Cross-Hair

D: 2008-4-15 C: 708.65 O: 665.0 H: 724.95 L: 660.2 V: 95K

**Adani Enterprises Limited (TRADING)**  
C-518.65 O-510.1 H-525.9 L-502.4 V-748471  
Pivot-515.6 R1-528.9 R2-539.1 S1-505.4 S2-492.4

1180.0  
963.0  
746.0  
313.9  
196 K

08-1-02 2008-5-30 2008-10-23 2009-3-24 2009-8-19 2010-1-18

Volume 95 K

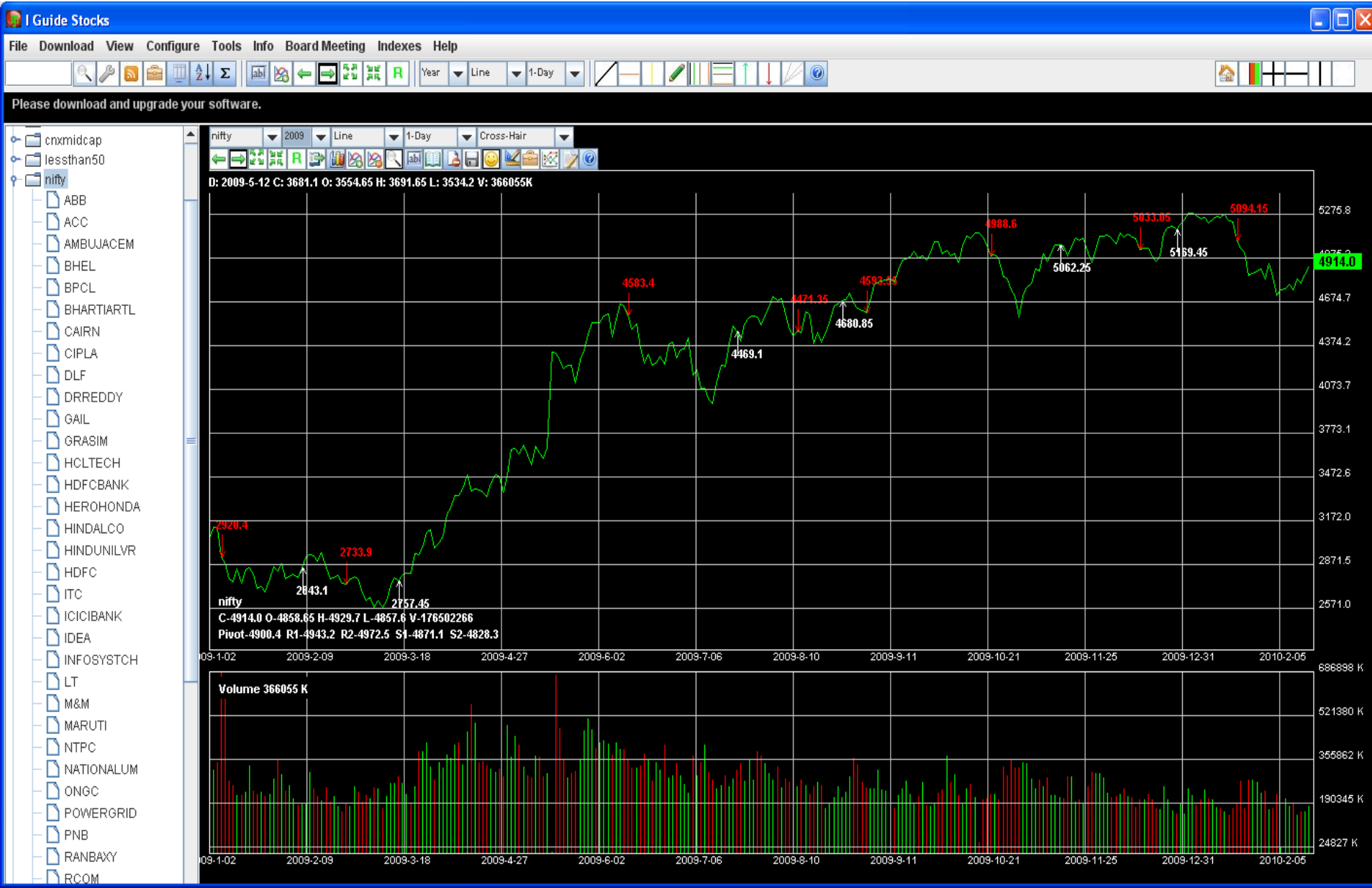
Detailed Analysis for ADANIENT by iGuideStocks

Support & Resistant		
Support & Resistant	Value 1	Value 2
Support	505.4	492.15
Resistance	528.9	528.9

Time	Value	% change
Weekly High	525.9	-1.39%
Weekly Low	470.0	9.38%
Monthly High	525.9	-1.39%
Monthly Low	430.1	17.07%
10 Day Simple Moving Average	483.7498	
40 Day Simple Moving Average	465.40594	

Indicator	Value	Explanation
Bi Weekly RSI(14 days)	81.3551	Currently RSI is above 70, Shows stock is in overbought zone. Time to Sell
MACDLINE(12,26) and MACDSIGNAL(9)	Curr MACD=0.094818115 Yesterday MACD=-3.2807617 Curr MACDSIGNAL=-8.409497 Yesterday MACD=-10.535576	Current MACD is 0.09 and yesterday's MACD is -3.28 Current MACDSIGNAL is -8.4 and yesterday's MACD is -10.53 MACD is positive and rising. The gap between the 12-day EMA and the 26-day EMA is widening. This indicates that the rate-of-change of the faster moving average is higher than the rate-of-change for the slower moving average. Positive momentum is increasing, indicating a bullish period for the price plot A Bullish Centerline Crossover occurs. This is a clear indication that momentum has changed from negative to positive, or from bearish to bullish.
10 days MMA 40 days MMA	MMA[10] 492.83182 MMA[40] 526.38025	1) Stock trading in bearish mode, trying to recover 2) Currently stock is above 5.23% from MMA10 and below -1.46% from MMA40. If stock is near to MMA40 then watch out stock and if it crosses MMA40 and stay above it time to enter

# Buy/Sell Signal after applying a formula on stock



# Daily Market Snapshot

**I Guide Stocks**

File Download View Configure Tools Info Board Meeting Indexes Help

Year Line 1-Day

Soon IGS world is going to be updated with all these features.

cnxmidcap

lessthan50

nifty

- ABB
- ACC
- AMBUJACEM
- BHEL
- BPCL
- BHARTIARTL
- CAIRN
- CIPLA
- DLF
- DRREDDY
- GAIL
- GRASIM
- HCLTECH
- HDFCBANK
- HEROHONDA
- HINDALCO
- HINDUNILVR
- HDFC
- ITC
- ICICIBANK
- IDEA
- INFOSYSTCH
- LT
- M&M
- MARUTI
- NTPC
- NATIONALUM
- ONGC
- POWERGRID
- PNB
- RANBAXY
- RCOM

Price UP				Price Down				Filter			
Price Up		Price Up(5%)		Price Down(5%)		Price Down(20%)		<input type="checkbox"/> jrnlifty		<input type="checkbox"/> cnx100	
Price Up(20%)		Price Up(10-20%)		Price Down(10-20%)		Price Down		<input type="checkbox"/> cnxmidcap		<input type="checkbox"/> lessthan50	
<input type="checkbox"/> nifty		<input type="checkbox"/> nifty		<input type="checkbox"/> nifty		<input type="checkbox"/> nifty		<input type="checkbox"/> niftymidcap50		<input type="checkbox"/> cnxbank	
SYMBOL	OPEN	HIGH	LOW	CLOSE	PREVCLOSE	LAST	TOTTRDQTY	% change			
JKCEMENT	175.15	194.9	175	191.5	174	194	1792694	10.057471			
STERTOOLS	88	100.5	86.3	95.9	86.9	95.15	287591	10.356731			
TFL	13.5	17	13.25	15.7	14.2	15.5	29502	10.56338			
ONMOBILE	380	421.7	378.7	406.15	366.95	403	3426268	10.682649			
HIRECT	79	91.8	75.55	86.3	77.85	86	2859009	10.854214			
ANTGRAPHIC	0.45	0.5	0.45	0.5	0.45	0.5	258029	11.111114			
EICHERMOT	534.85	619.65	526	591.2	527.5	588.1	385461	12.075831			
VHL	322.5	326	294	315.3	275.75	308	64228	14.342697			
INDOTECH	278.4	329.9	278	319.75	276.2	317.7	1074477	15.767555			
AMTEKINDIA	62	73.4	62	73.2	61.15	73.4	4537595	19.705633			
JINDALPHOT	181	215.8	179.55	215.75	179.8	215.8	1237161	19.994436			

# Result after running a strategy on a category

The screenshot shows the 'I Guide Stocks' application interface. The main window displays a 'Stock Screener Panel' with the following details: Start Date 2009-7-1, Category nifty, Selected Formula C:\igsentindia\formula\mmastrategy.fl. The panel contains a table with columns for Symbol, Buy/Sell, and Pattern. The 'SIEMENS' stock is highlighted in green, indicating a 'STRONGBUY' recommendation. The left sidebar shows a tree view of stock categories, including 'nifty' and various stock symbols.

Symbol	Buy/Sell	Pattern
SIEMENS	STRONGBUY	
NTPC		
NATIONALUM		
SATYAMCOMP		
SBIN		
SAIL		
STER		
SUNPHARMA		
SUZLON		
TATACOMM		
TCS		
TATAMOTORS		
ONGC		
TATAPOWER		
TATASTEEL		
UNITECH		
WIPRO		
ZEEL		
ABB		
ACC		
AMBUJACEM		
BHEL		
BPCL		
POWERGRID		
BHARTIARTL		
CAIRN		
CIPLA		
DLF		
DRREDDY		
GAIL		
GRASIM		
HCLTECH		
HDFCBANK		
HEROHONDA		
PNB		
HINDALCO		
HINDUNILVR		
HDFC		
ITC		

# Formula Building Screen with Graph Display

One month intraday charts are available for all CNX500 stocks.

- cnxmidcap
- lessthan50
- nifty
  - ABB
  - ACC
  - AMBUJACEM
  - BHEL
  - BPCL
  - BHARTIARTL
  - CAIRN
  - CIPLA
  - DLF
  - DRREDDY
  - GAIL
  - GRASIM
  - HCLTECH
  - HDFCBANK
  - HEROHONDA
  - HINDALCO
  - HINDUNILVR
  - HDFC
  - ITC
  - ICICIBANK
  - IDEA
  - INFOSYSTCH
  - LT
  - M&M
  - MARUTI
  - NTPC
  - NATIONALUM
  - ONGC
  - POWERGRID
  - PNB
  - RANBAXY
  - RCOM

ACC 2008 Line 1-Day Cross-Hair

nifty  
 C-4914.0 O-4858.65 H-4929.7 L-4857.6 V-176502266  
 Pivot-4900.4 R1-4943.2 R2-4972.5 S1-4871.1 S2-4828.3

08-1-02 2008-5-29 2008-10-20 2009-3-20 2009-8-13 2010-1-11

Selected Formula C:\igsentindia\formula\resistance.fl

```

IF (BARNO == 0)
{
  X := GETVALUE(CLOSE[0],NOOFBARS - 1)
  UPPERVAL := X * 1.15
  DOWNVAL := X * 0.85
  ADDTOGLOBAL(UP,UPPERVAL)
  ADDTOGLOBAL(DOWN,DOWNVAL)
  ADDTOGLOBAL(PIVOT,X)
}

B := PEAK[CLOSE[0],10]
C := TROUGH[CLOSE[0],10]

IF (B <> 0 AND CLOSE[0] > PIVOT AND CLOSE[0] < UP )
{
  LINEXY(0,B,NOOFBARS,B,YELLOW)
}

IF (C <> 0 AND CLOSE[0] > DOWN AND CLOSE[0] < PIVOT)
{
  LINEXY(0,C,NOOFBARS,C,RED)
}
        
```

# Portfolio Back testing after applying different formulas

I Guide Stocks

File Download View Configure Tools Info Board Meeting Indexes Help

Formula language is upgraded with a lot of new API. All major functions supported in Metastock are available in IGSIndia.

Portfolio Backtesting Panel, Start Date 2009-1-1, Category nifty

Symbol	mmastrategy.fl	BuyHold.fl
DRREDDY	60.6	132.8
GAIL	27.2	95.6
GRASIM	70.2	121.8
HCLTECH	83.0	197.7
HDFCBANK	40.6	60.7
HEROHONDA	40.7	111.5
HINDALCO	127.9	167.9
HINDUNILVR	-16.5	-3.0
HDFC	7.4	59.3
ITC	0.4	43.8
ICICIBANK	97.5	76.8
IDEA	50.2	6.1
INFOSYSTCH	19.5	120.9
LT	146.1	73.8
M&M	73.6	263.6
MARUTI	24.8	138.4
NTPC	-5.6	8.7
NATIONALUM	70.6	83.9
ONGC	22.2	60.5
POWERGRID	28.0	24.8
PNB	137.3	62.6
RANBAXY	36.0	74.5
RCOM	13.2	-33.1
RELIANCE	-34.8	-20.5
RELIINFRA	89.5	64.1
RPL	49.7	22.3
SATYAMCOMP	132.3	-43.2
SIEMENS	93.6	121.5
SBIN	49.7	44.5
SAIL	30.2	147.8
STER	67.2	184.8
SUNPHARMA	14.9	45.6
SUZLON	165.8	12.3
TATACOMM	-28.8	-40.1
TCS	35.6	202.2
TATAMOTORS	227.1	284.5
TATAPOWER	5.8	62.6
TATASTEEL	58.4	151.0
UNITECH	58.9	55.7
WIPRO	75.7	171.8
ZEEL	11.7	88.9
Average Return	47.151993	77.63201

# Portfolio with profit/Loss analysis

Show Portfolio



Symbol	Date	Buy/Sell	Price/Curr Price	Qty/Rem. Qty	Value/Tot. Value	% Loass/Profit	Profit/Loss	Delete Row
TCS	17-FEB-2010	Buy	748.65	50	37432			delete
Total			758.65	50	37932.5	1.3357377	500.0	
Overall Total					37932.5	1.3357377	500.0	