

iGuideStocks Formula Language

iGuideStocks Team



Session Objectives

- ▶ **Overview of *iGuideStocks* Formula Language**
- ▶ **Demonstrate its capabilities and power**
- ▶ **Study some basic formulas and show how you can build on these**
- ▶ **Get you on road to building your own formulas**
- ▶ **Learn how to share formulas with friends**

PLEASE ASK QUESTIONS ANYTIME!

What is IGS Formula Language ?

- **Programming Language**
- **Used to build your own indicators, tests etc**
- **Extends the power of iGuideStocks beyond pre-shipped systems**

iGuideStocks Formula Language

Build

- **Custom Indicators**
- **System Tests**
- **Explorations**
- **Experts**

Formula Language Overview

- **Indicator Profiles**
- **Mathematical Operators**
- **Indicator Parameters**

Price Array Identifiers

- **Name**
- **Open[0]** **today's open**
- **High[0]** **today's high**
- **Low[0]** **today's low**
- **Close[0]** **today's close**
- **Volume[0]** **today's volume**
- **Close[-1]** **PREV close**

IndicatorArray Examples

- **Sma(10 ,0)** simple moving average of 10 day for today
- **smaany(high[0],10,0)** simple moving average of high value of last 10 days for today

Mathematical Operators

- **+ Addition**
- **- Subtraction (or negative)**
- *** Multiplication**
- **/ Division**

Mathematical Operators

- ▶ **(open[0] + close[0]) / 2**
- ▶ **5 + 10 + 20**
- ▶ **Close[0] * 1.05**
- ▶ **(Close[0] – lowindays[10;0])**

Operator Precedence

- ▶ **- Negative Values**
- ▶ *** Multiplication**
- ▶ **/ Division**
- ▶ **+ Addition**
- ▶ **- Subtraction**
- ▶ **< Less Than**
- ▶ **> Greater Than**
- ▶ **== Equal to**
- ▶ **<> Not equal to**
- ▶ **:= Variable Assignment Operator**

Order of Calculation

- **Inner most calculation first**
- **"H + L / 2" = "L / 2" + H**
- ✓ **"(H + L) / 2"**

Formula Functions

Approximately 20 inbuilt functions

- **Abs{ Close[0] }**
- **Print{ “hello” }**
- **Buy{“a”}**
- **Plot1{close[0],green}**
- **Sell{“1”}**

Customized Indicator Builder

Example 1 : Draw MACD histo graph in new panel

`MACDLINE[12;26;9;0] – MACDLINE[12;26;9;0]`

Click on customized indicator

Indicator Builder

Example 2: Make closing line on main graph in red when close is less than open and green when close is greater than open.

Write following formula and click on execute.

```
If ( close[0] < open[0] )  
{  
    plot1 {close[0],red}  
}  
else  
{  
    plot1 {close[0],green}  
}
```

Indicator Builder

- **If statements**
- **And statements**
- **Referencing Custom Indicators**

Indicator Builder

Draw buy signal when RSI is less than 30 and sell when RSI is greater than 70

Write following formula

```
If ( rsi[14;0] > 70 )  
{  
    sell{"S"}  
}  
Else if ( rsi[14;0] < 30 )  
{  
    buy{"b"}  
}
```

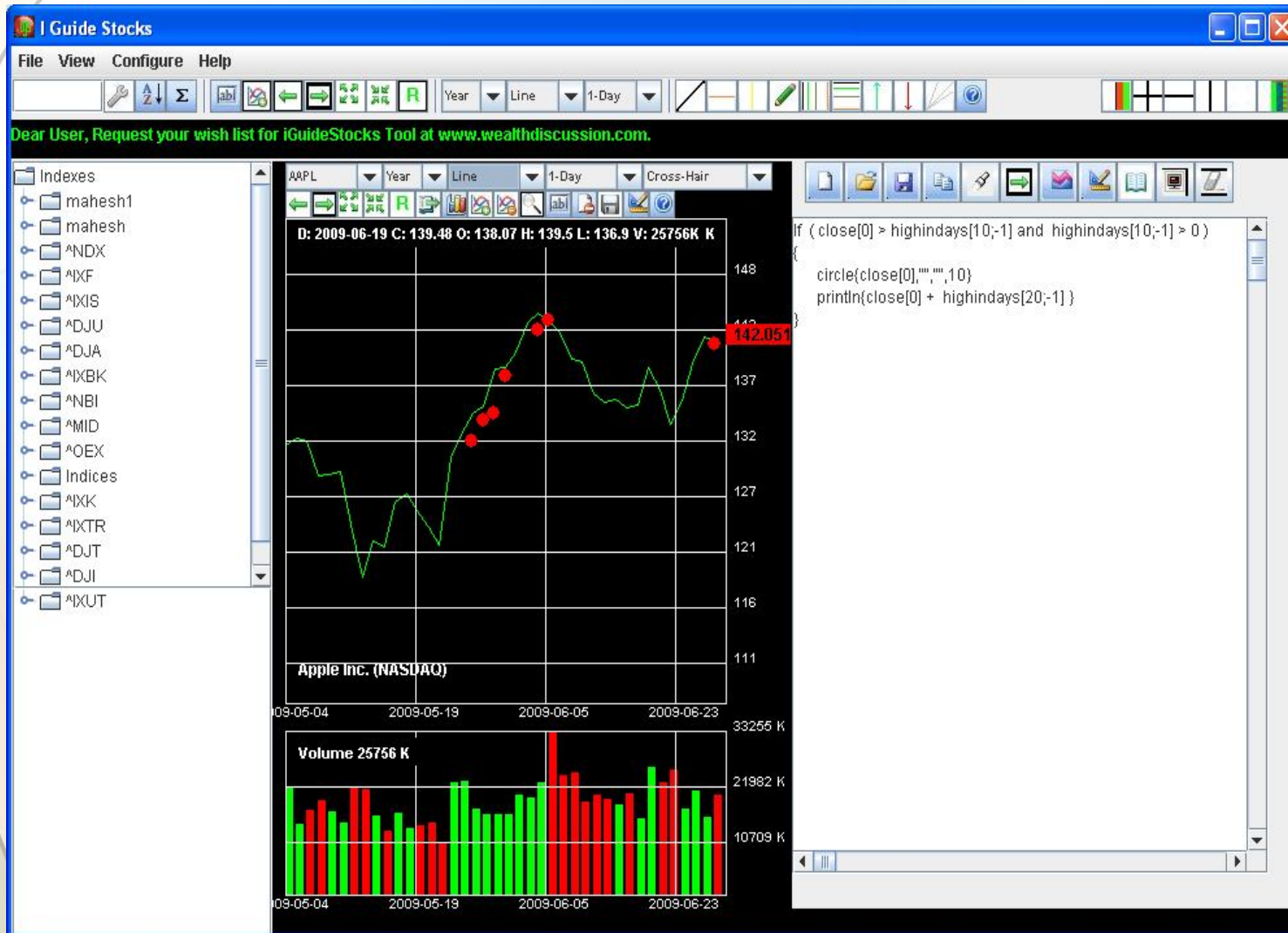
Other Formulas - Chart Profiles

- **New Highs**
- **New Lows**

Stocks Making New Highs in 10 days

```
If ( close[0] > highindays[10;-1] and  
highindays[10;-1] > 0 )  
{  
    circle{close[0], "", "", 10}  
}
```

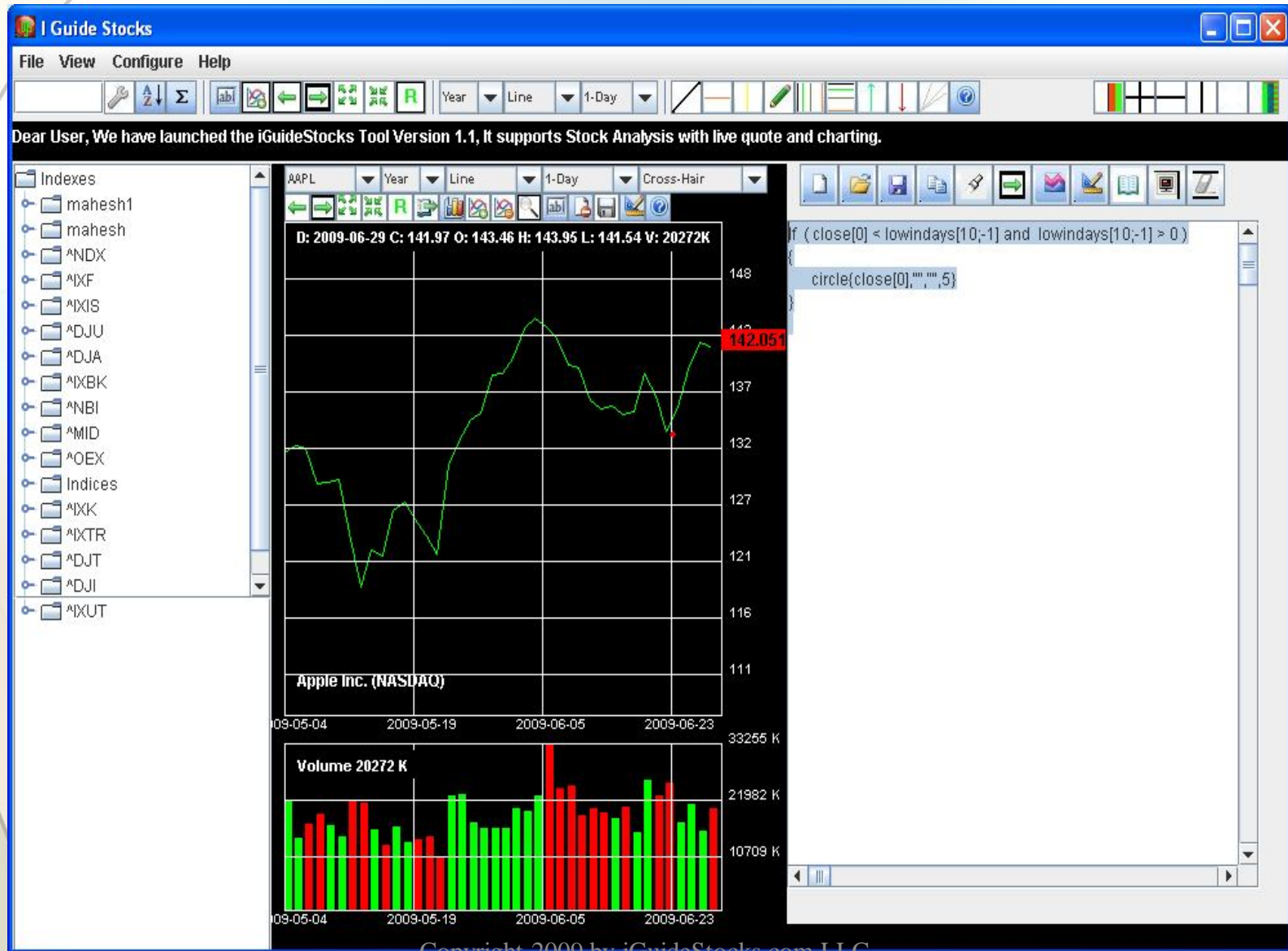
Stocks Making New Highs



Stocks Making New Lows

```
If ( close[0] < lowindays[10;-1] and  
lowindays[10;-1] > 0 )  
{  
    circle{close[0], "", "", 5}  
}
```

Stocks Making New Lows



Retracements

Retrace closing price by 9 days
Plot1 {close[-9];white}

Retracements

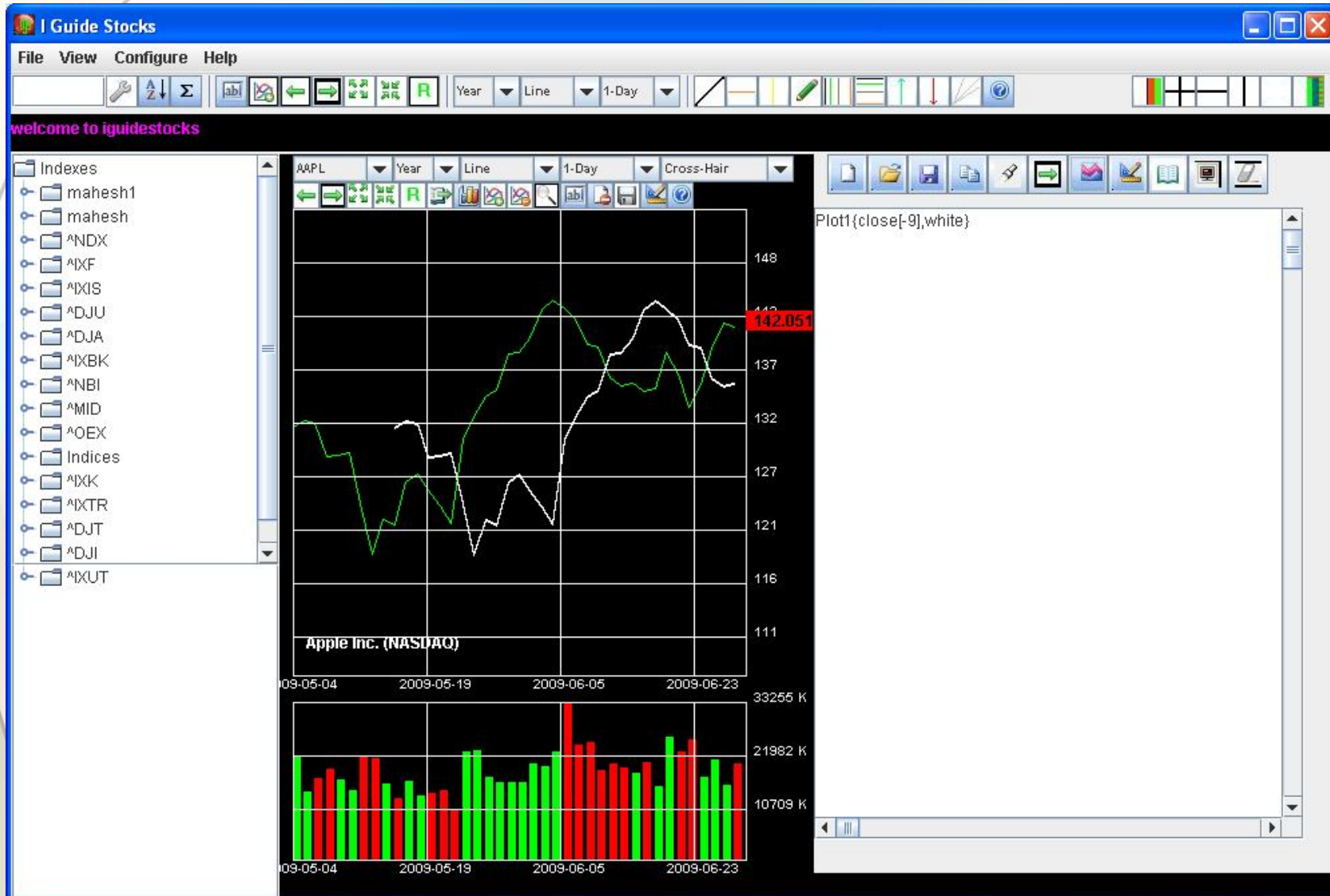


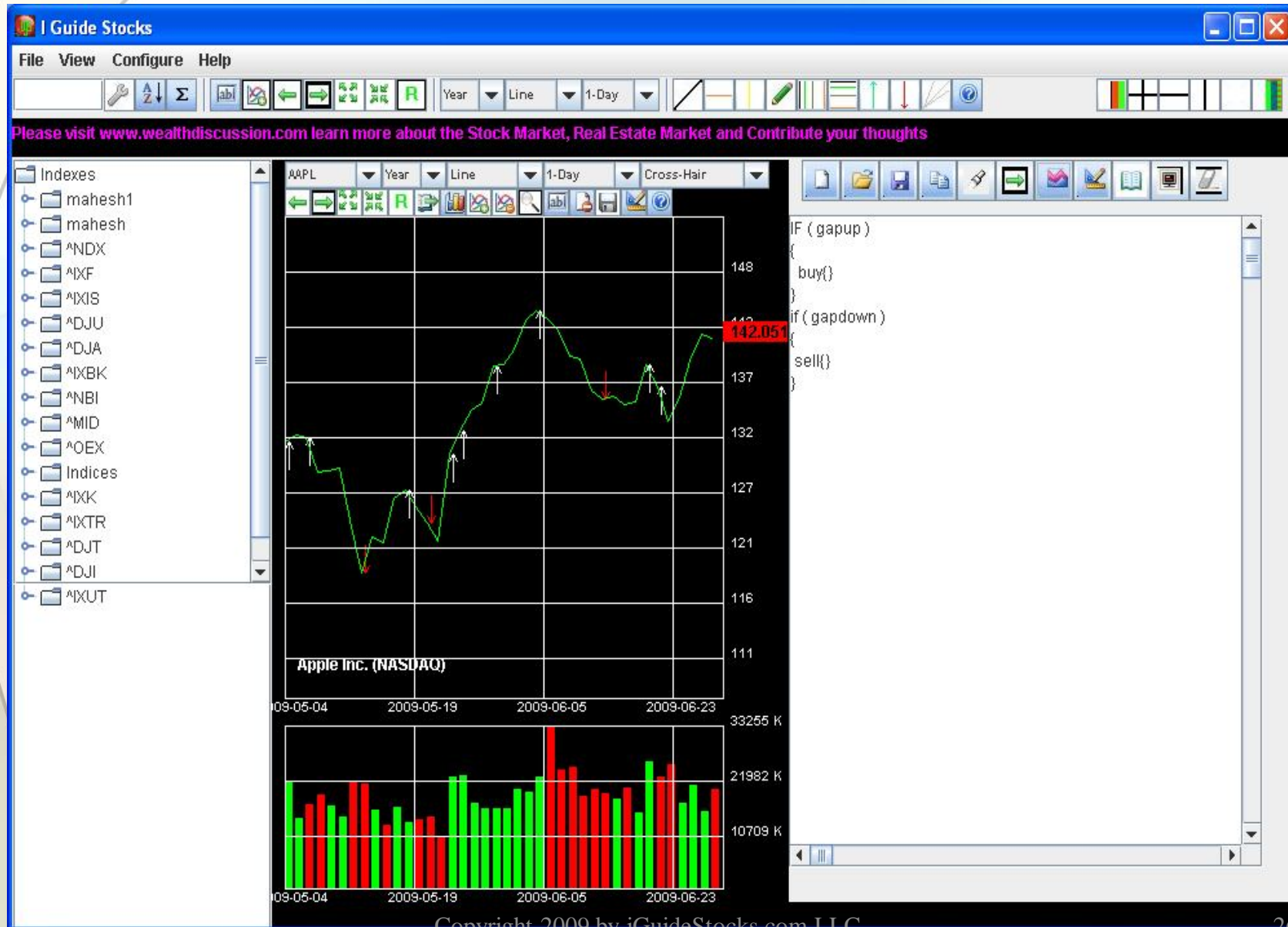
Chart Formations

- **Gaps Up**
- **Gaps Down**
- **Reversal pattern**

Gaps Up and gapdown

```
If ( gapup )  
{  
    buy{ }  
}  
If ( gapdown )  
{  
    sell{ }  
}
```

Gaps Up and down



Further Resources

- **iGuideStocks Help and Manual**
- **www.iguidestocks.com**



Thank You!!!